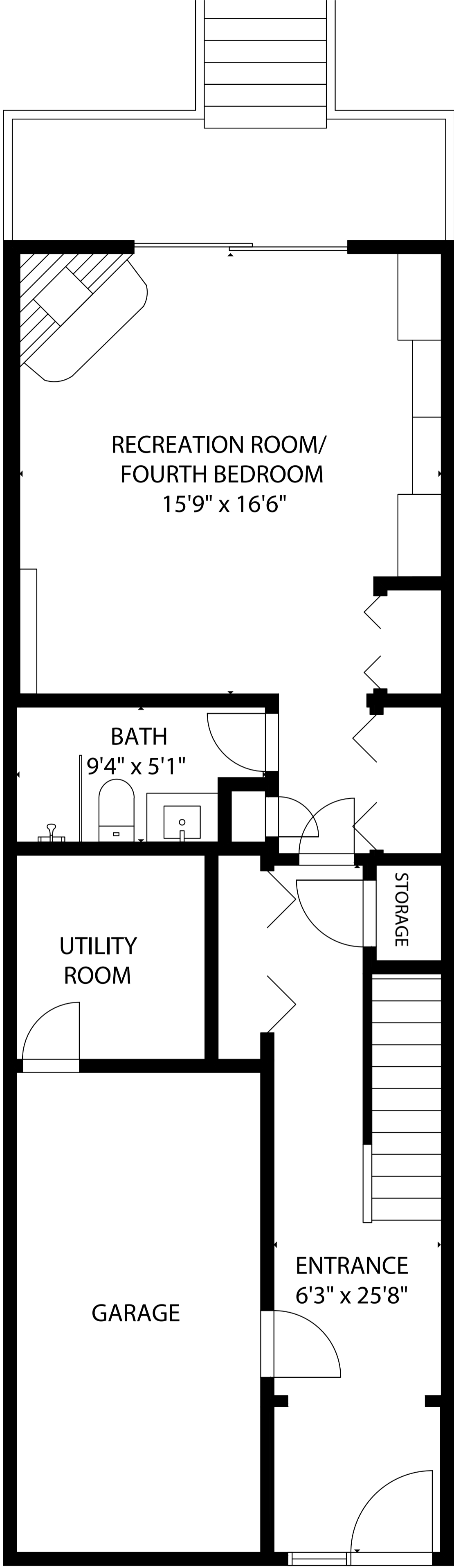
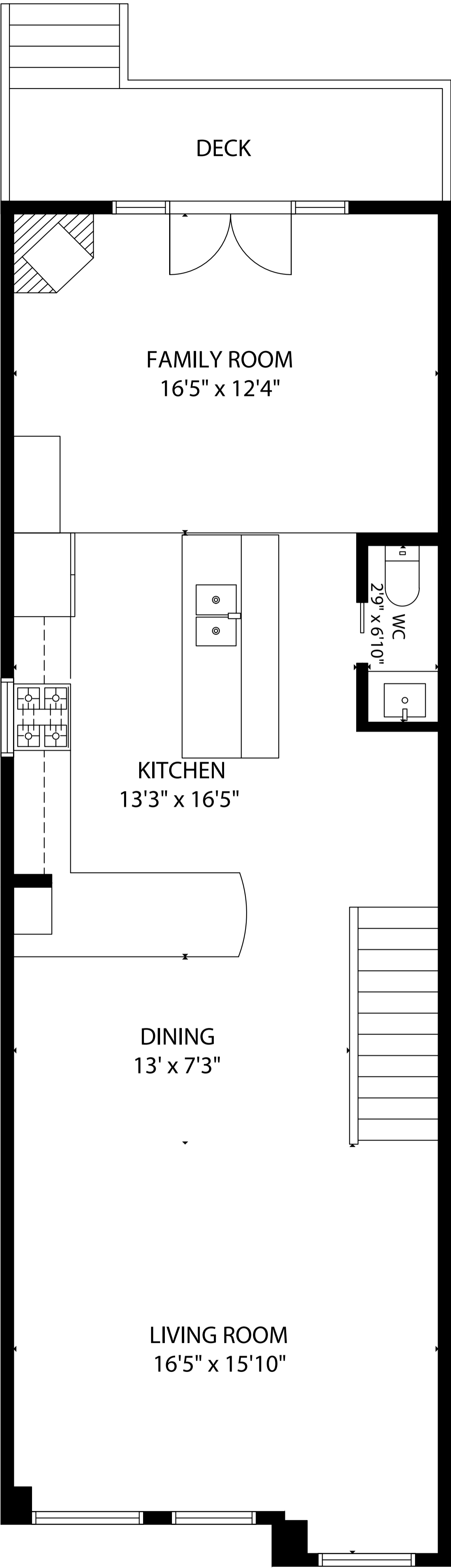


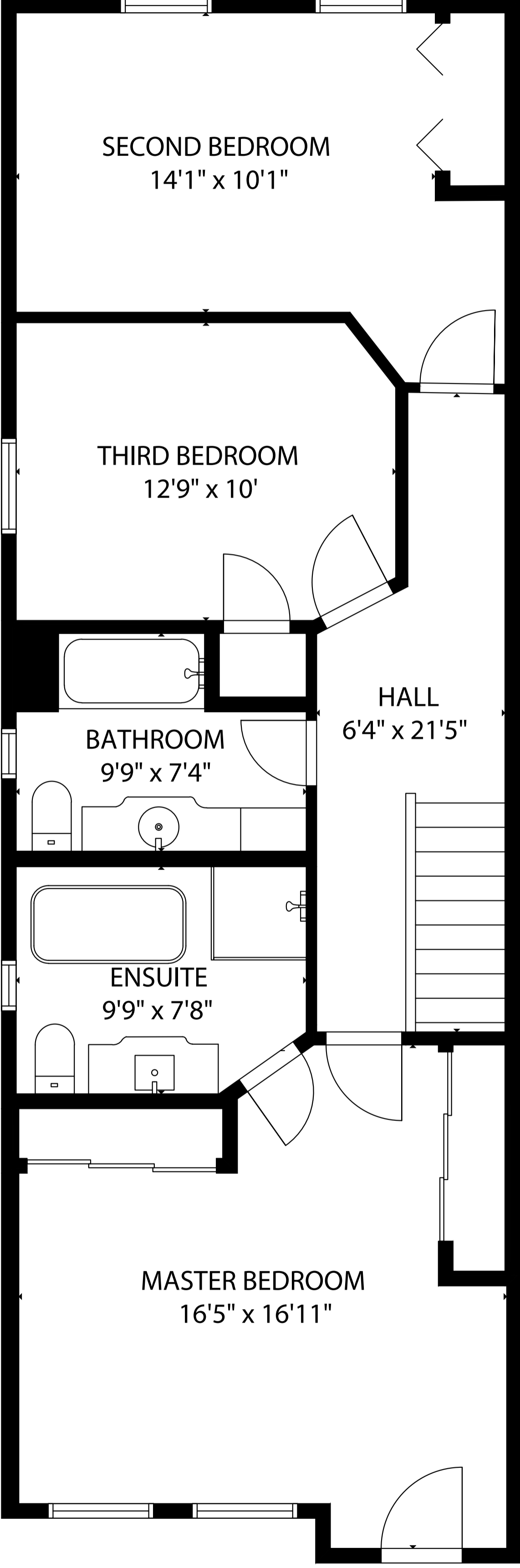
# 29 Roslin Avenue



LOWER LEVEL



MAIN FLOOR



SECOND FLOOR

GROSS INTERNAL AREA  
 MAIN FLOOR: 834 sq ft, SECOND FLOOR: 831 sq ft  
 LOWER LEVEL: 513 sq ft  
 TOTAL: 2,178 sq ft  
 SIZE AND DIMENSIONS ARE APPROXIMATE, ACTUAL MAY VARY.