



HEAPS ESTRIN

REAL ESTATE TEAM



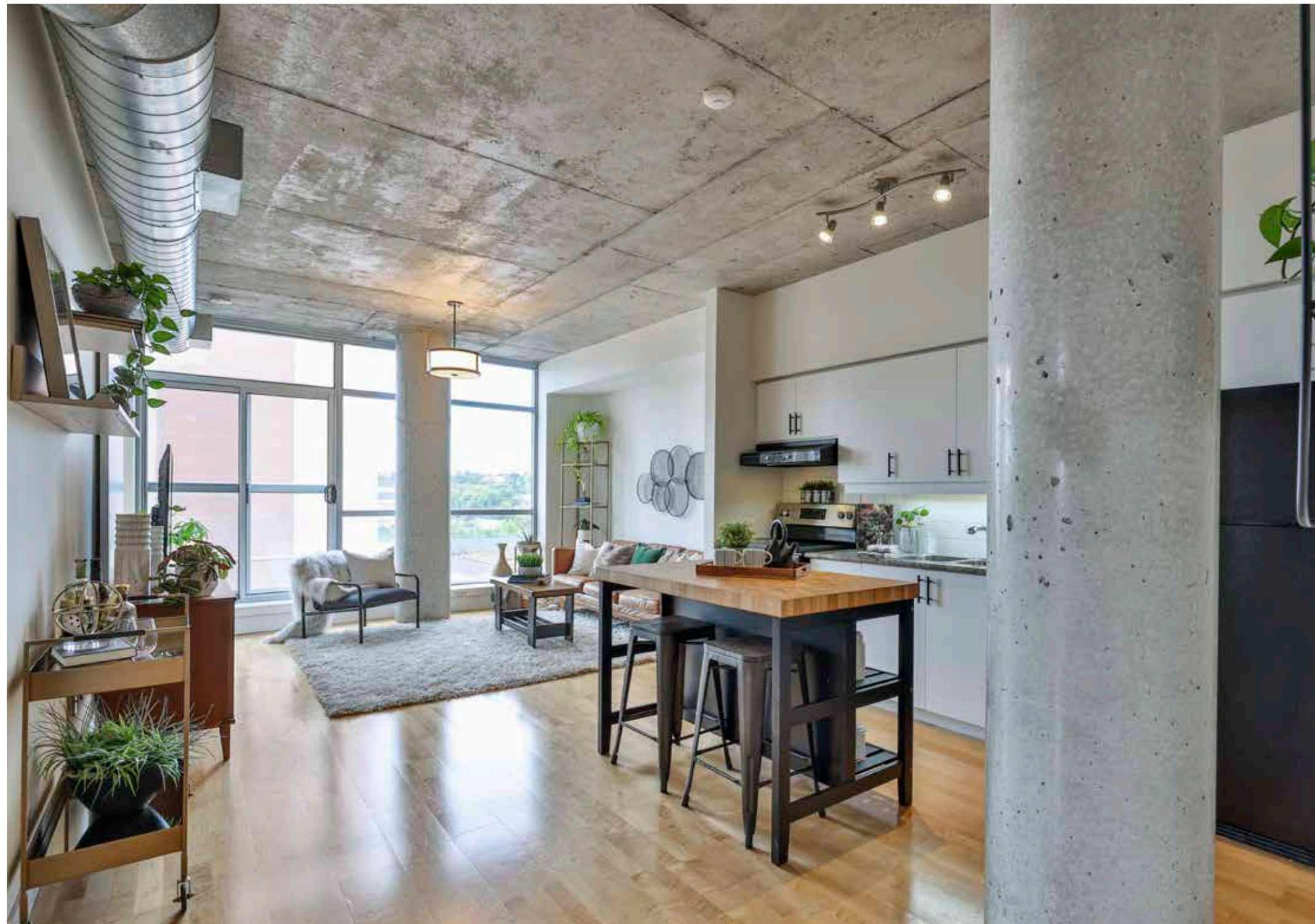
1375 Dupont Street
Suite 507



1375 Dupont Street Suite 507

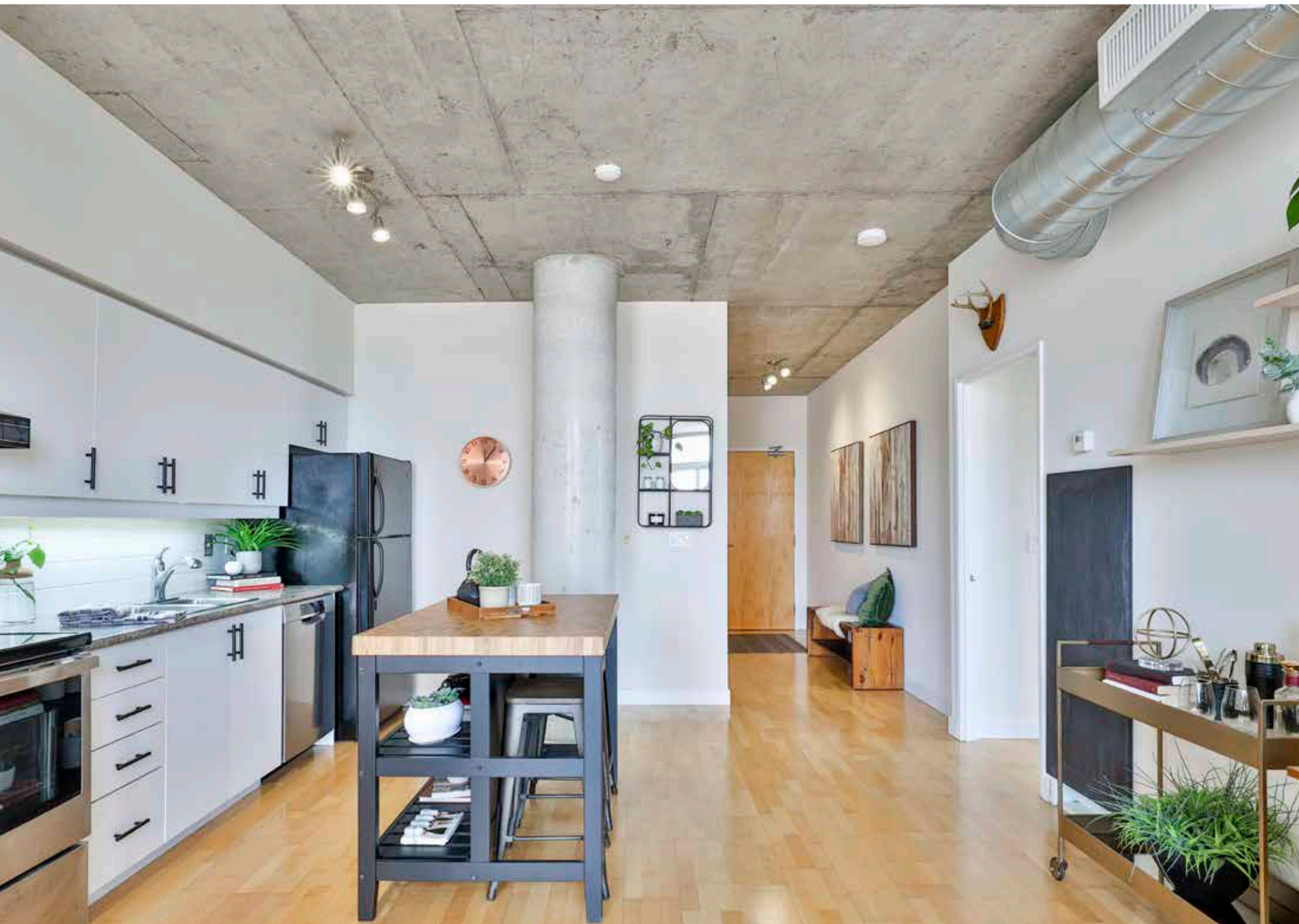
An exciting opportunity at the highly coveted Chelsea Lofts. Suite 507 offers incredible space and one of the best layouts in the building at just under 900 square feet. This corner suite is flooded with natural sunlight and boasts exposed concrete ceilings, architectural columns and huge windows. Walking through the generous front hallway leads to a well-designed open concept kitchen, dining and living area - perfect for entertaining and everyday living. The bright primary bedroom is fully complemented by a large four-piece ensuite bathroom and ample closet space. The roomy second bedroom offers lovely west views and a large closet. If it is not needed as a bedroom, it would be an excellent home office or gym. Suite 507 is complete with a second full bathroom, large walk-in ensuite laundry/storage room and one car parking space.

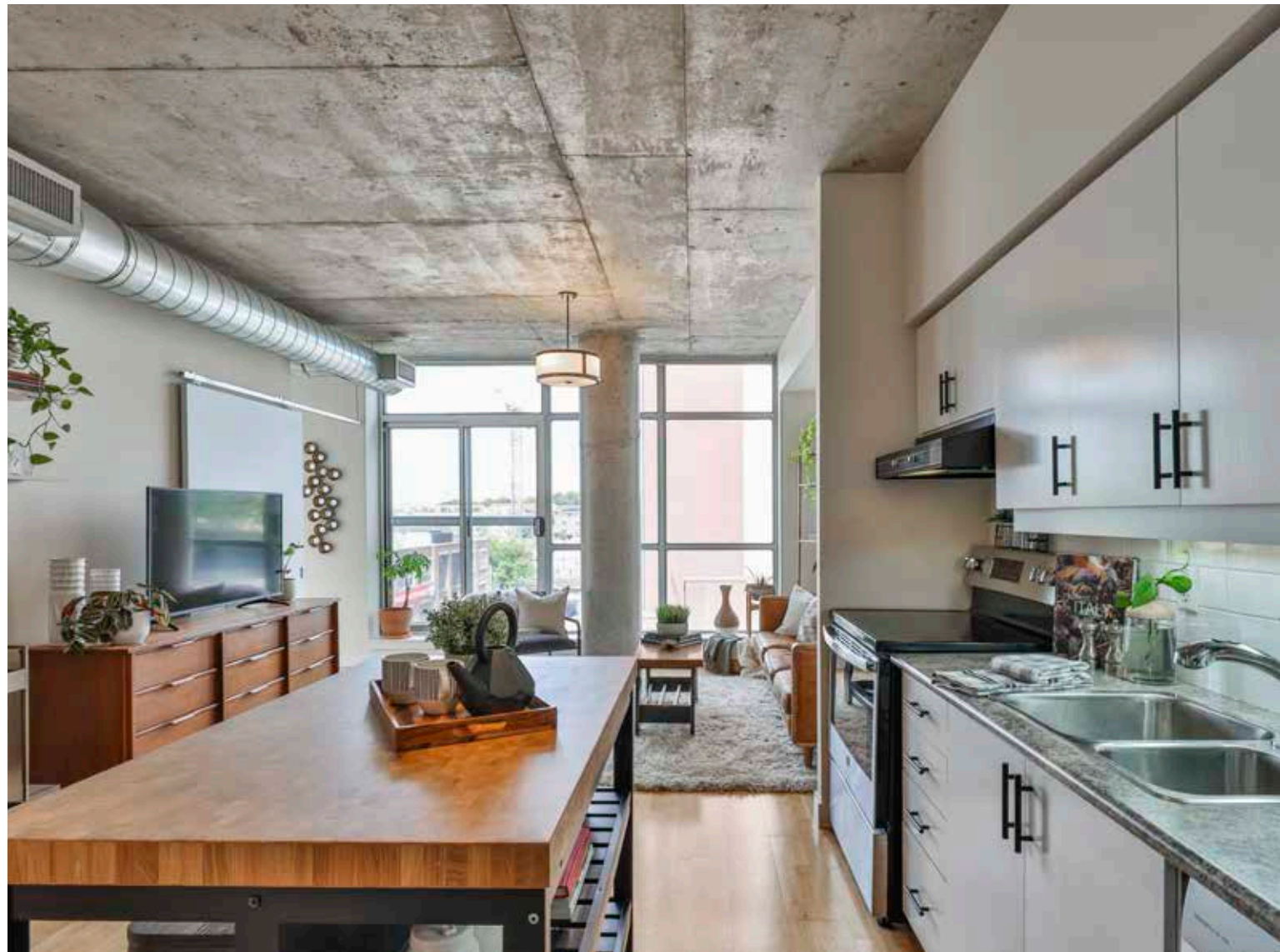
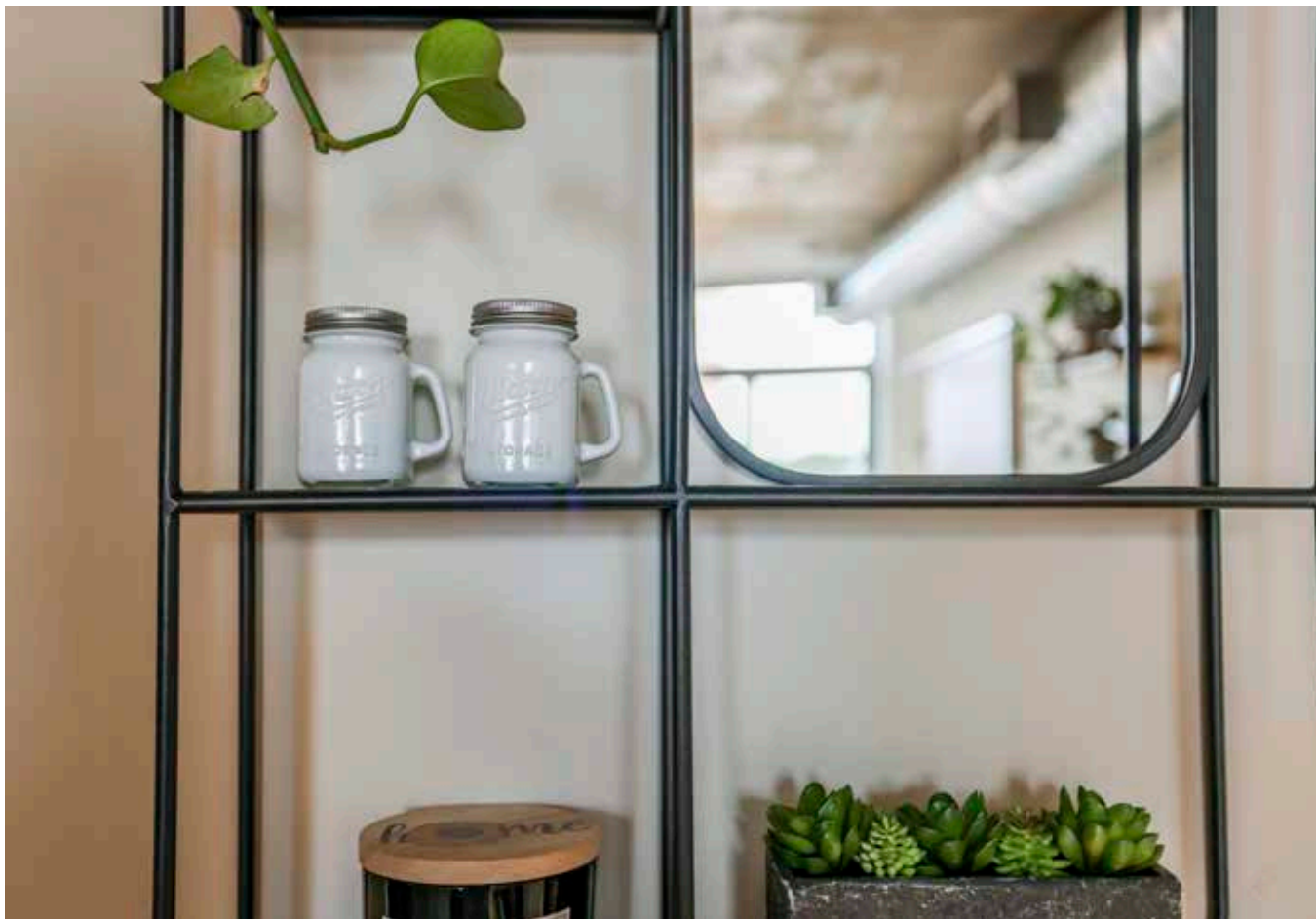
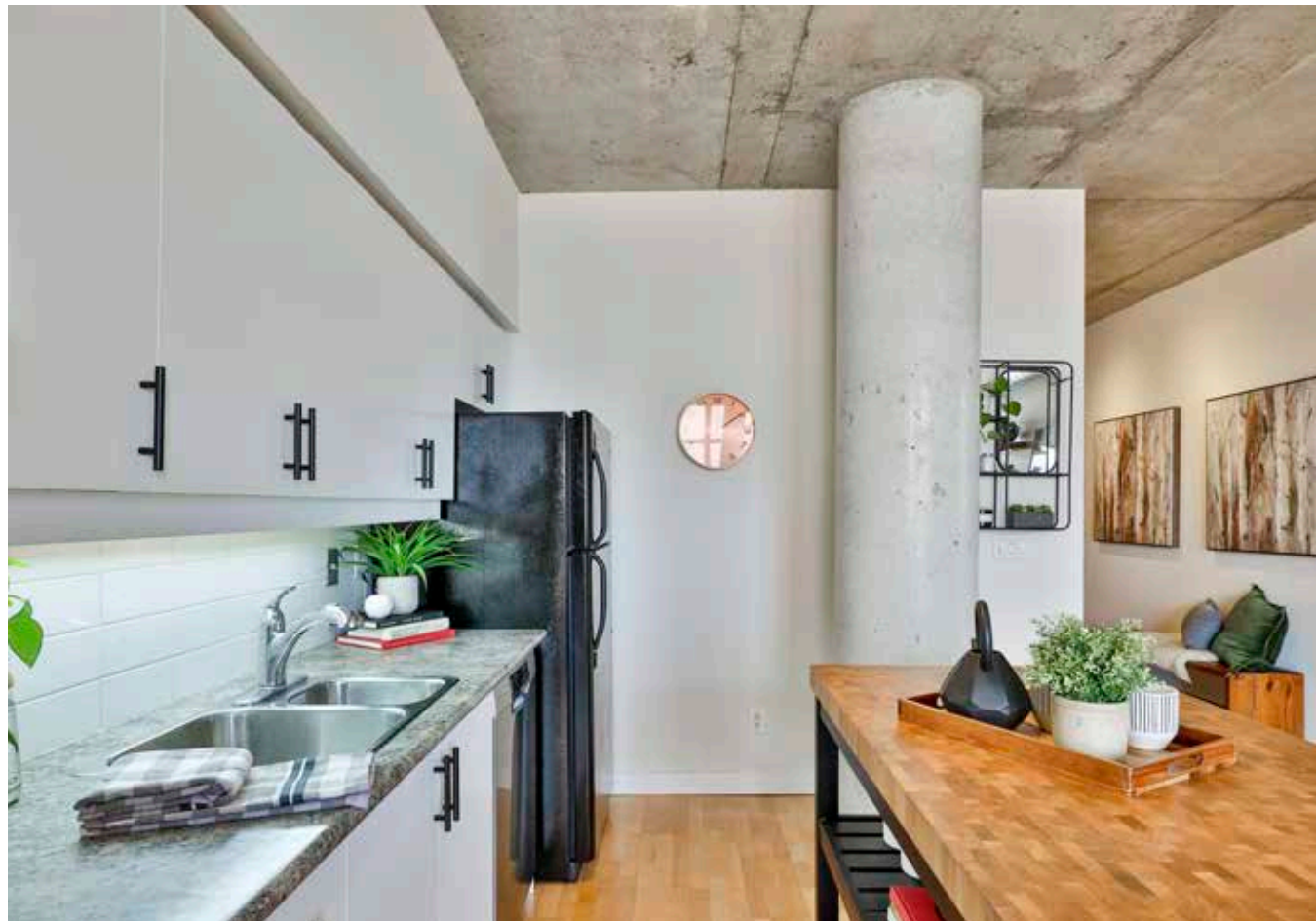
The Chelsea Lofts is located in the vibrant and hip Dovercourt-Wallace-Emerson- Junction neighbourhood. With only 72 units in the building, it offers the highly sought after boutique loft-living lifestyle. It is steps away from popular restaurants, coffee shops and grocery stores. The future Galleria on the Park development nearby will further bolster the vibrancy of the area with an eight-acre park, new shops and trendy places to gather.

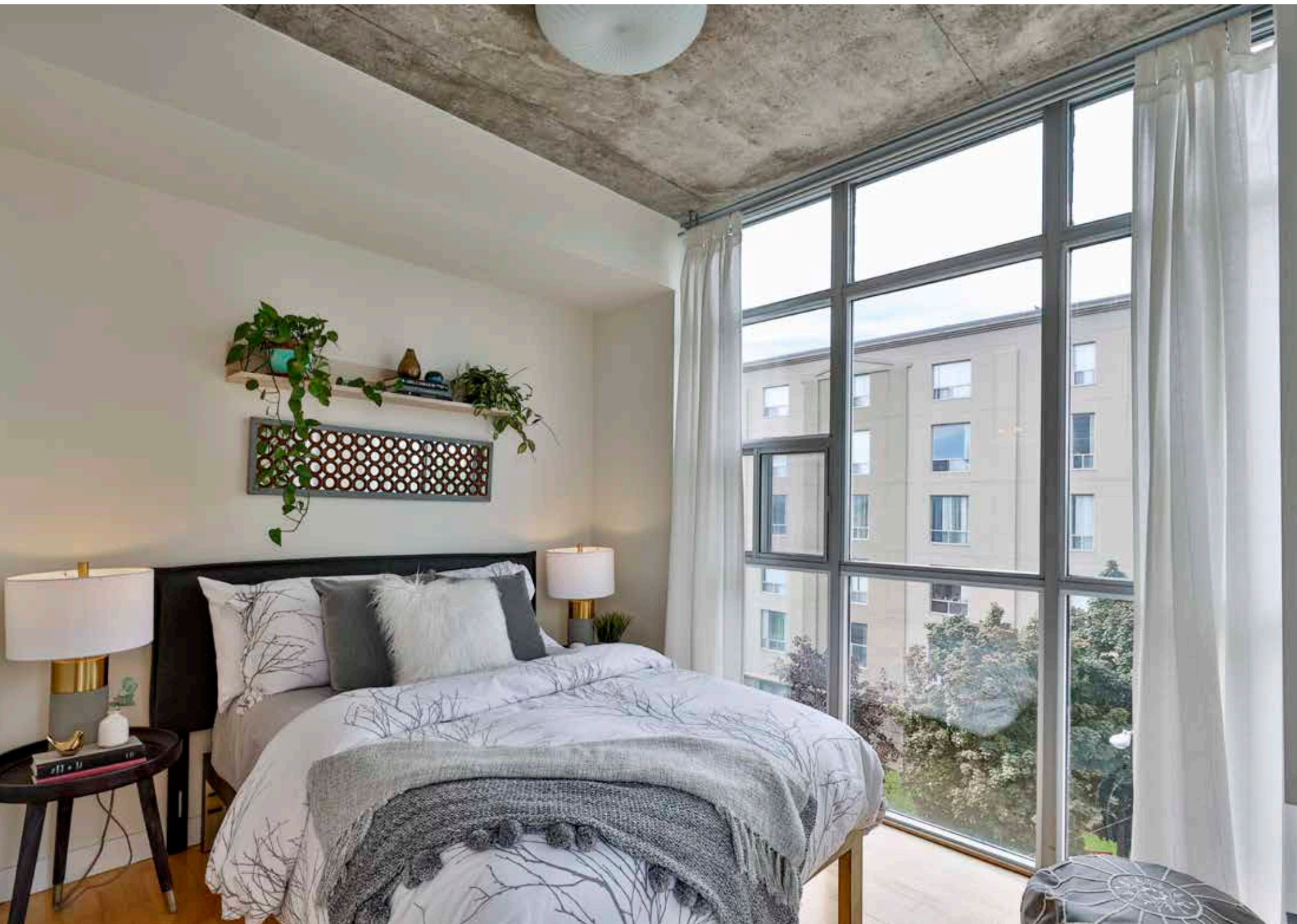


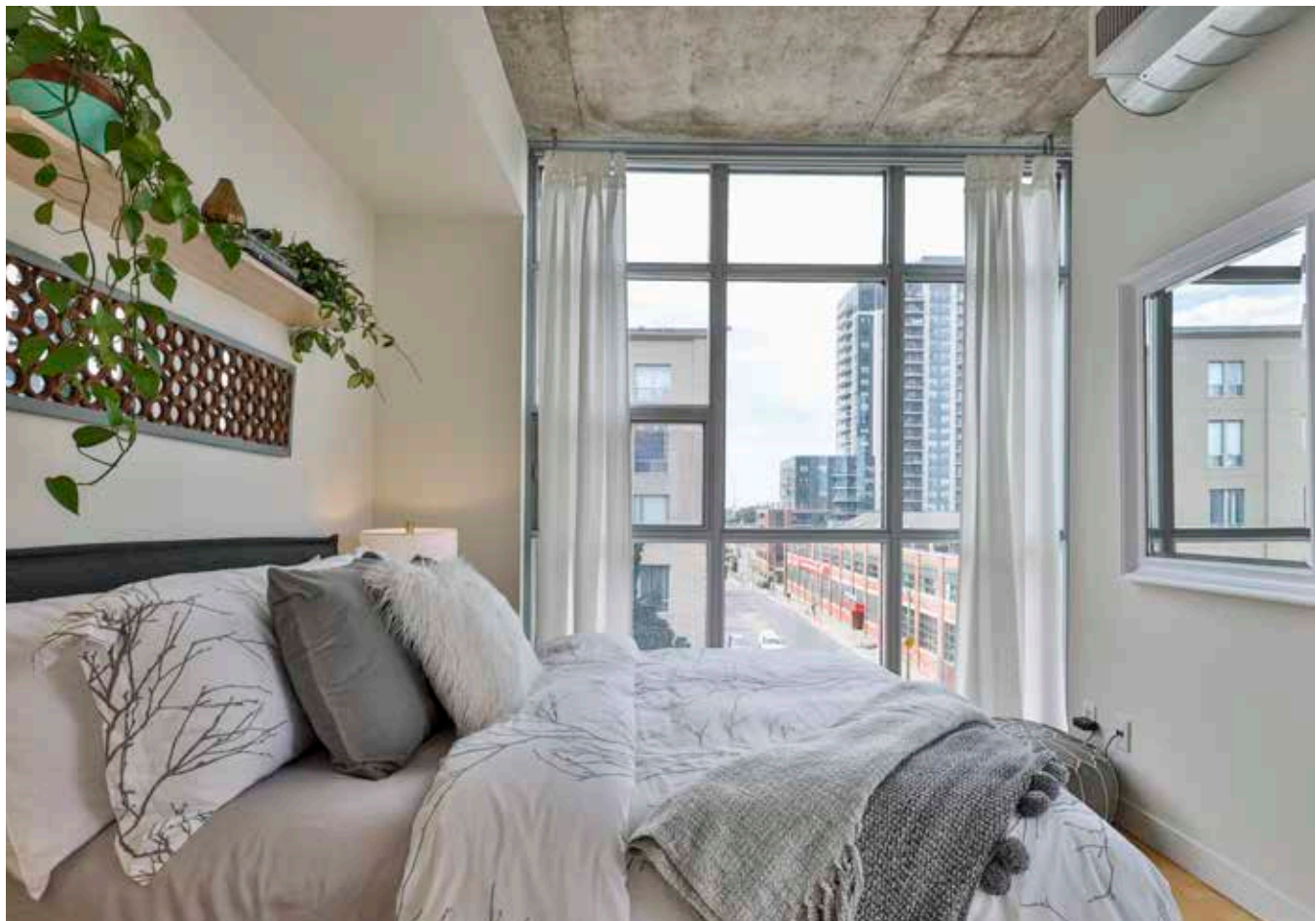


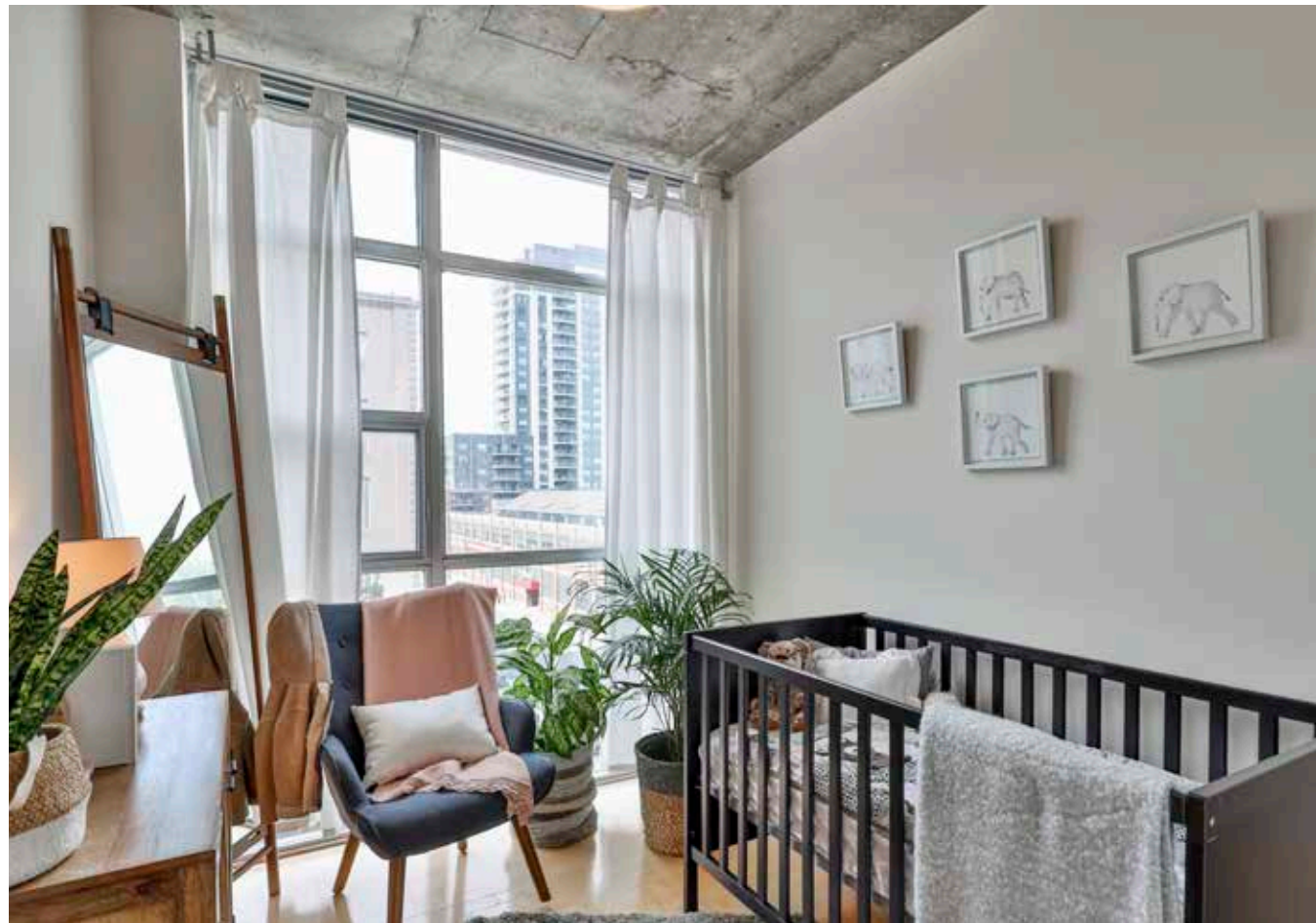


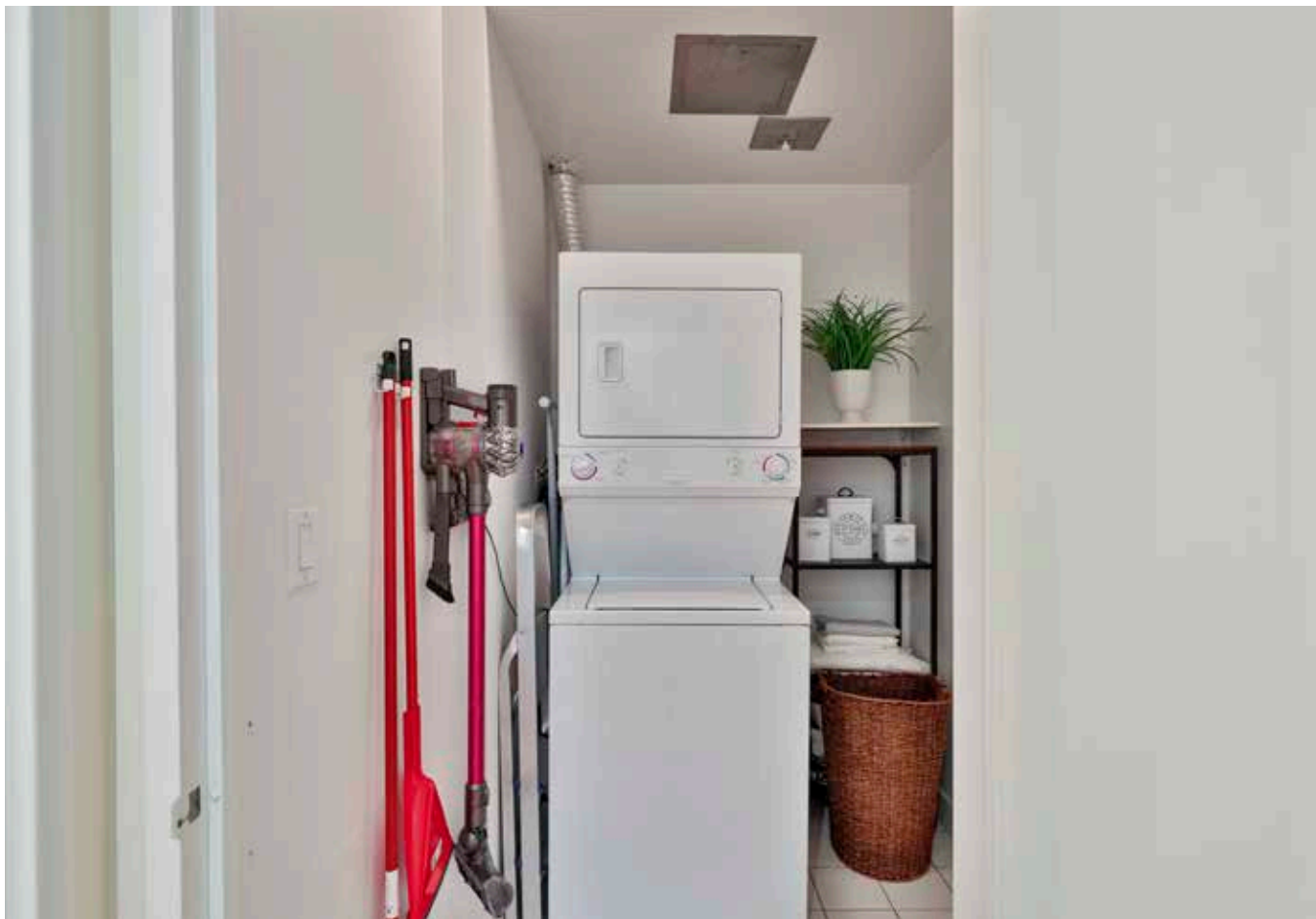


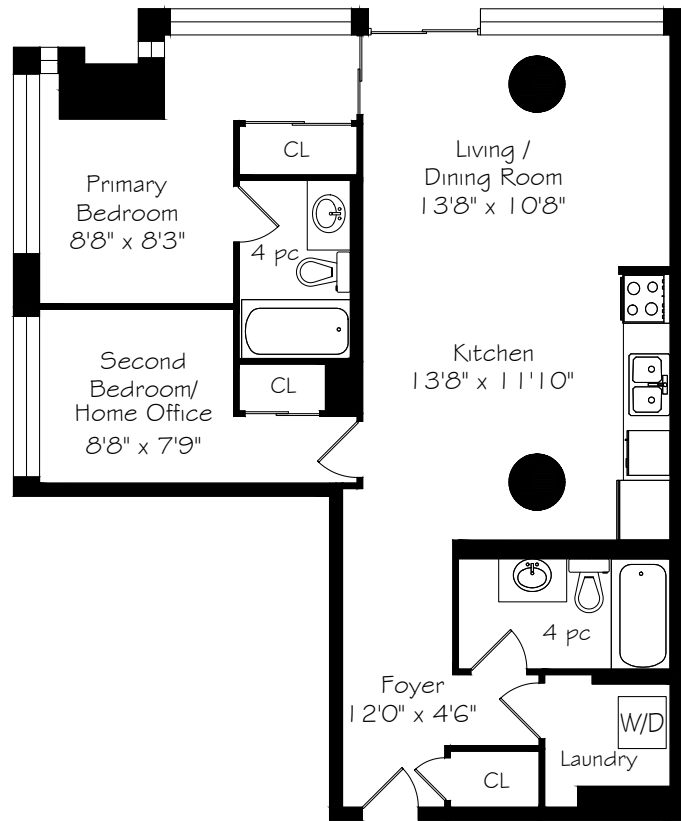




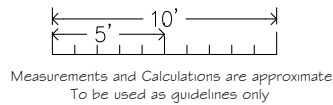








Suite 507



Features

- Modern loft style
- 10 ft ceilings
- Exposed concrete ceilings
- Architectural columns
- Beautiful North West exposure
- Ideal layout
- Plenty of storage space
- Rare two full bedrooms and bathrooms
- Open concept living/dining/kitchen
- Large walk-in laundry/storage room
- One car underground parking
- Walking distance to trendy shops and restaurants in The Junction
- Convenient location with two large grocery stores steps away

INCLUSIONS

- Refrigerator, stove, dishwasher, washer/dryer, electrical light fixtures, window coverings

EXCLUSIONS

- Kitchen island

Details

TAXES

\$2,053.01 (2021)

MONTHLY MAINTENANCE FEES

\$664.69

POSSESSION

30-60 Days

HEATING

Gas, forced air

COOLING

Central air conditioning

PARKING

One car underground parking spot



HEAPS ESTRIN

REAL ESTATE TEAM

We are a team of passionate and dedicated professionals who strive to ensure that each client's unique needs are met. Our goal is to deliver every client with a full service real estate experience that exceeds all expectations.



Brenna Whyte

M.Sc.

SALES REPRESENTATIVE

647.895.3827

Brenna@HeapsEstrin.com

HEAPSESTRIN.COM



Follow us to learn more about our exclusive listings, events and contests.

For Royal LePage Real Estate Services Heaps Estrin Team, Brokerage. All information and statements contained herein, provided by Royal LePage Real Estate Services Heaps Estrin Team, Brokerage regarding property for sale, rental or financing is from sources deemed reliable and assumed correct, but no warranty or representation is made as to the accuracy thereof and same is submitted subject to errors, omissions, changes in price, rental or other conditions, prior sale or withdrawal without notice.

Royal LePage Real Estate Services Heaps Estrin Team, Brokerage Independently Owned and Operated