



3 Garden Circle



Nestled in the serene Bennington Heights neighbourhood of Toronto and featuring four bedrooms and six bathrooms, 3 Garden Circle is a testament to biophilic design and sustainable living. Crafted with meticulous attention to detail by the acclaimed Heather Dubbeldam and her team and constructed by Mazenga Building Group, this residence encapsulates the essence of nature-infused modernity, offering its inhabitants an unparalleled living experience.

Stepping into this 4,800-square-foot home, you're welcomed by its light-filled, architecturally striking design that marries indoor living with the natural world outside through strategic window placement and professionally landscaped gardens. With its heated limestone floors and spacious custom closet, the warm entryway leads to a grand two-storey area highlighted by an 18-foot window, accentuating the home's airiness and connection to nature. The layout includes a sophisticated dining room with a large picture window and a double-sided fireplace shared with the living room, which, along with the kitchen, features large windows, high-end appliances, and an oversized sliding glass door to the deck, extending the living space outdoors. An office with ample storage, a central spiral staircase crafted from Sapele wood, a mudroom with custom cabinetry, and a secluded powder room round out the main floor's luxurious and functional design.



The second level offers a masterful blend of elegance and practicality, showcasing four generously sized, light-filled bedrooms, three of which come complete with their own ensuite bathrooms, offering privacy and convenience. The primary suite is a tranquil haven adorned with hardwood floors, a spacious walk-in closet, and a luxurious four-piece ensuite bathroom, providing a perfect escape. A signature feature of this level is the magnificent three-storey custom sapele wood staircase by Berman Stairs, with its graceful curve and openness to the skylight above, enriching the journey through the home with natural light and architectural allure.

This level also boasts heated hardwood floors throughout, pot lights, power window coverings for added elegance, and a spacious hallway illuminated by a large skylight. Added amenities include a substantial laundry room, an additional three-piece bathroom, and a bespoke linen storage unit, ensuring functionality and making the upstairs living space both luxurious and accommodating.

The lower level is complete with a sizable recreation room being utilized as a yoga/exercise studio and games area, a separate gym, a sauna, a three-piece bathroom and multiple storage areas, including a cedar walk-in closet, cold storage and large dedicated storage space. This versatile lower is outfitted as a health enthusiast's dream.

3 GARDEN CIRCLE

The rear garden further highlights the home's design principles that focus on integrating with the surrounding environment with a tiered ipe deck leading down to a lap pool surrounded by old-growth trees. A pool house with a hot tub built into the outdoor decking and a fire pit on the small patio transforms the backyard into a relaxing oasis.

Garden Circle House is more than a residence; it is a sanctuary that celebrates the connection between indoor and outdoor living. Its innovative design and commitment to sustainability offer a unique living experience that is both luxurious and in harmony with nature.





Key Features

- With just over 56 feet of lot frontage, this exquisite custom home creates a dynamic presence on the private cul-de-sac
- Completed by the award-winning Dubbeldam Architecture and Design and constructed by the renowned Mazenga Building Group, this home is a testament to skill and attention to detail
- Details include stunning curb appeal with a private driveway, a concealed built-in garage, extensive landscaping, natural building materials and overlapping overhangs with lush green roofs.
- The heated front walkway side walkway, driveway and garage offer little to no maintenance in the winter and ample parking and an electric car charger
- The entire home boasts radiant in-floor heating and built-in speakers throughout
- The main level offers hardwood floors, designer pot lights and power window coverings
- Inviting foyer with custom white oak veneer closet and features Piasentina limestone tile floors
- Custom front door and all windows by Bauhaus Windows
- The hallway is double height with stunning pendant light fixtures and a two-storey window, offering a dynamic and light-filled setting as you walk through the home
- The dining room has a gorgeous centre light fixture, a double-sided custom fireplace, millwork that divides the dining and living spaces while also creating a visual connection and a large picture window facing the front gardens with custom built-in storage beneath
- The living room has hardwood floors, a double-sided Montigo fireplace with honed limestone surround with custom oak stained millwork storage, a walnut veneer entertainment unit complete with a Samsung television, a large picture window and double pot lights
- Exquisite kitchen with top-of-the-line appliances, Caesarstone counters, walnut veneer, and lacquered finish cabinets with integrated finger pulls and a tabour door niche for small appliance storage or coffee bar
- Blum Aventos upper cabinets open and close with the push of a button
- The kitchen opens up to the rear deck, offering seamless integration with the outdoor space with large sliding panel doors
- This space also has direct access to the office, pantry, and mudroom.
- An opening to the living room with bar seating creates the perfect connection for entertaining
- The generously sized space off of the kitchen with custom millwork doubles as an office with ample pantry storage - also featuring a window allowing for ample natural light,
- Built-in garage with access to the mudroom, heated concrete floors and storage
- Storewall panels and accessories offer a multitude of storage capabilities within the garage
- Powder room tucked away with porcelain tiles, custom white oak vanity with honed Carrera marble counter
- The pinnacle of the home is the three-storey custom sapele wood staircase by Berman Stairs, slightly curved and open to the skylight above
- The second level has heated hardwood floors, pot lights and power window coverings. The hallway is spacious, with a large skylight bringing in natural light
- Custom linen closet with ample storage

Key Features

- Three generously sized secondary bedrooms with hardwood floors, closet storage and pot lights. Two bedrooms have access to ensuite bathrooms with glass-enclosed showers, custom vanity and medicine cabinets and Corian countertops
- Spacious primary bedroom, with hardwood floors, walk-in closet and a spa-like primary four-piece ensuite bathroom with glass-enclosed marble tiled shower, soaker tub with marble bathtub surround, custom vanity and medicine cabinet, and heated towel rack.
- The lower level has heated polished concrete floors, an ample recreation room, a fitness studio, and a sauna next to the three-piece bathroom with a glass-enclosed steam shower and many storage options
- The home embodies sustainable design principles, from the selection of materials to the integration with the surrounding environment. The home's thoughtful placement and orientation maximize natural light and ventilation, reducing the need for artificial lighting and climate control
- A tiered ipe deck and lap pool are embraced by old-growth trees, creating a secluded oasis. Large windows and floor-to-ceiling sliding doors seamlessly integrate indoor and outdoor spaces
- The pool features a motorized pool cover, adding tremendous value due to heat loss and maintenance. Integrated lighting that can change colour sets the mood for any occasion.
- Cabana is next to the pool, which houses a two-piece bathroom, a separate change area, and pool equipment storage.
- Newly installed astroturf in the backyard





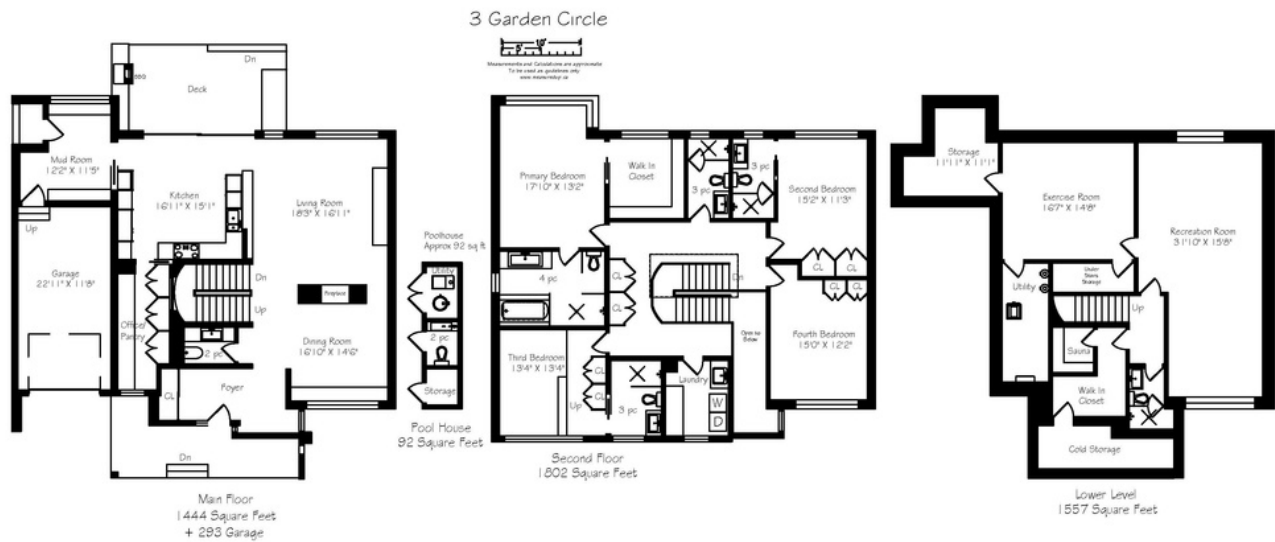
INCLUSIONS

- Subzero 42" built-in fridge
- GE monogram 36" induction cooktop
- Falmec 36" cooktop hood
- Wolf 30" oven
- Wolf 30" warming drawer
- 24" microwave speed oven
- 24" dishwasher
- Subzero 24" wine fridge
- Samsung washing machine and dryer
- Master chef bar fridge (garage)
- Samsung television in living room
- Sonos sound bar in the living room
- Montigo double-sided gas fireplace
- Sauna and related equipment
- Lift Master garage door opener
- Velux electric venting skylight
- Proshade roller window shades
- GeneralAire elite steam humidifier
- GSW electric water heater
- Eclipse automatic safety pool cover
- Hydropool hot tub
- New hot tub cover in storage
- Pentair Superflo high-performance pump
- Hayward automatic chlorine feeder
- Raypak gas-fired pool heater
- Napoleon built-in gas BBQ
- Betz salt water and chlorine pool
- Grizzle electric car charger

3 GARDEN CIRCLE

EXCLUSIONS

- Art



Details

LOT SIZE

56.67 feet x 98 feet

TAXES

18,602.37(2023)

POSSESSION

60 Days Or To Be Arranged

HEATING

Radiant in-floor heating with supplemental forced air heating system

COOLING

Central air conditioning

PARKING

Heated private driveway (2) and built-in garage (1)



HEAPS ESTRIN

REAL ESTATE TEAM

We are a team of passionate and dedicated professionals who strive to ensure that each client's unique needs are met. Our goal is to deliver every client with a full service real estate experience that exceeds all expectations.



CAILEY HEAPS
BROKER OF RECORD

416.424.4910
cailey@heapsestrin.com



BRAD COX
REAL ESTATE AGENT

416.424.4910
brad@heapsestrin.com



Follow us to learn more about our
exclusive listings, events and contests.

HEAPSESTRIN.COM | 416.424.4910 | @HEAPSESTRIN

For Royal LePage Real Estate Services Heaps Estrin Team, Brokerage. All information and statements contained herein, provided by Royal LePage Real Estate Services Heaps Estrin Team, Brokerage regarding property for sale, rental or financing is from sources deemed reliable and assumed correct, but no warranty or representation is made as to the accuracy thereof and same is submitted subject to errors, omissions, changes in price, rental or other conditions, prior sale or withdrawal without notice.

Royal LePage Real Estate Services Heaps Estrin Team, Brokerage Independently Owned and Operated